

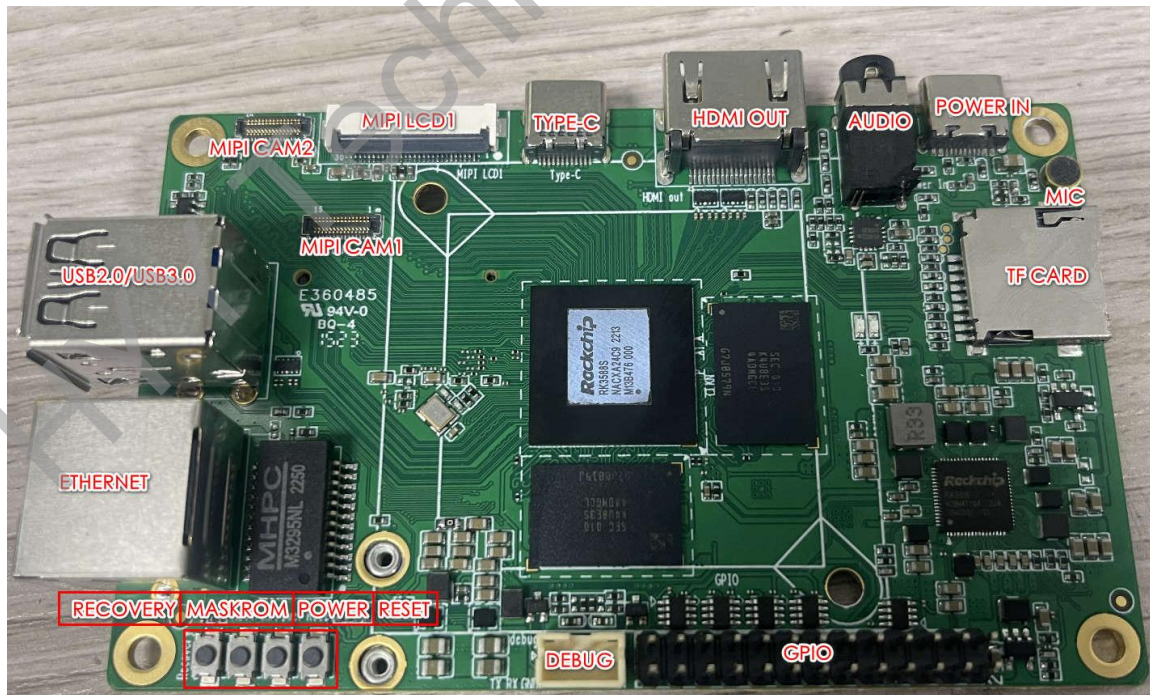


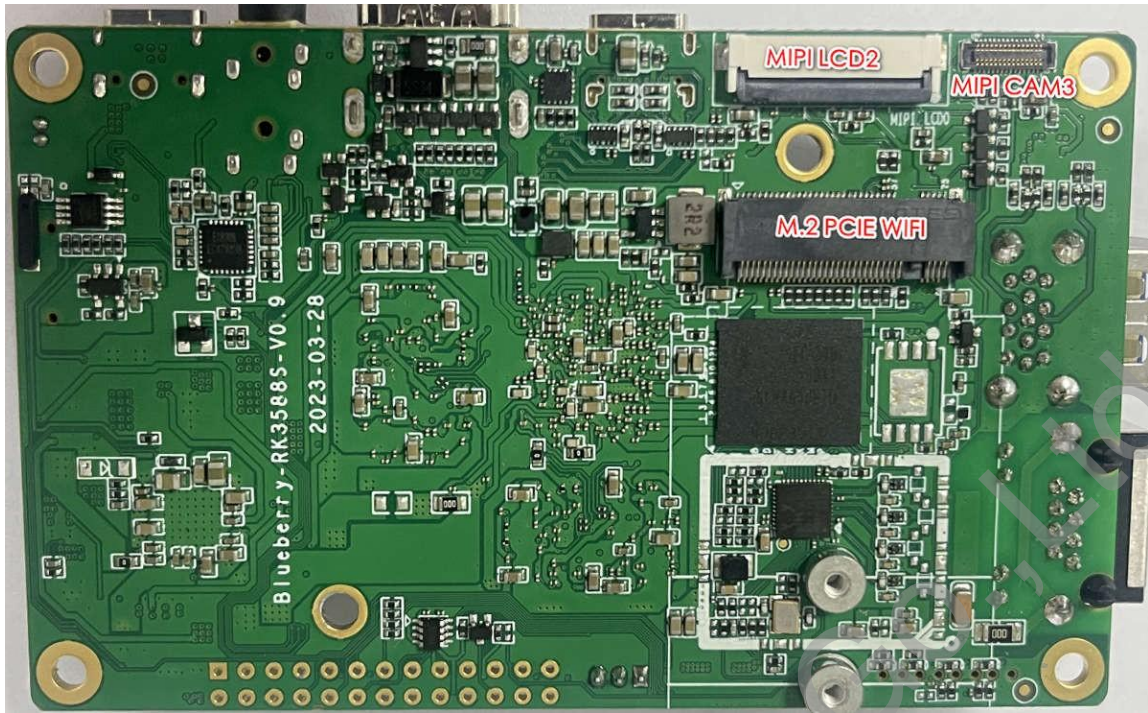
Durian Pi specification

HYY-P1

DurianPi HYY-P1 Product introduction

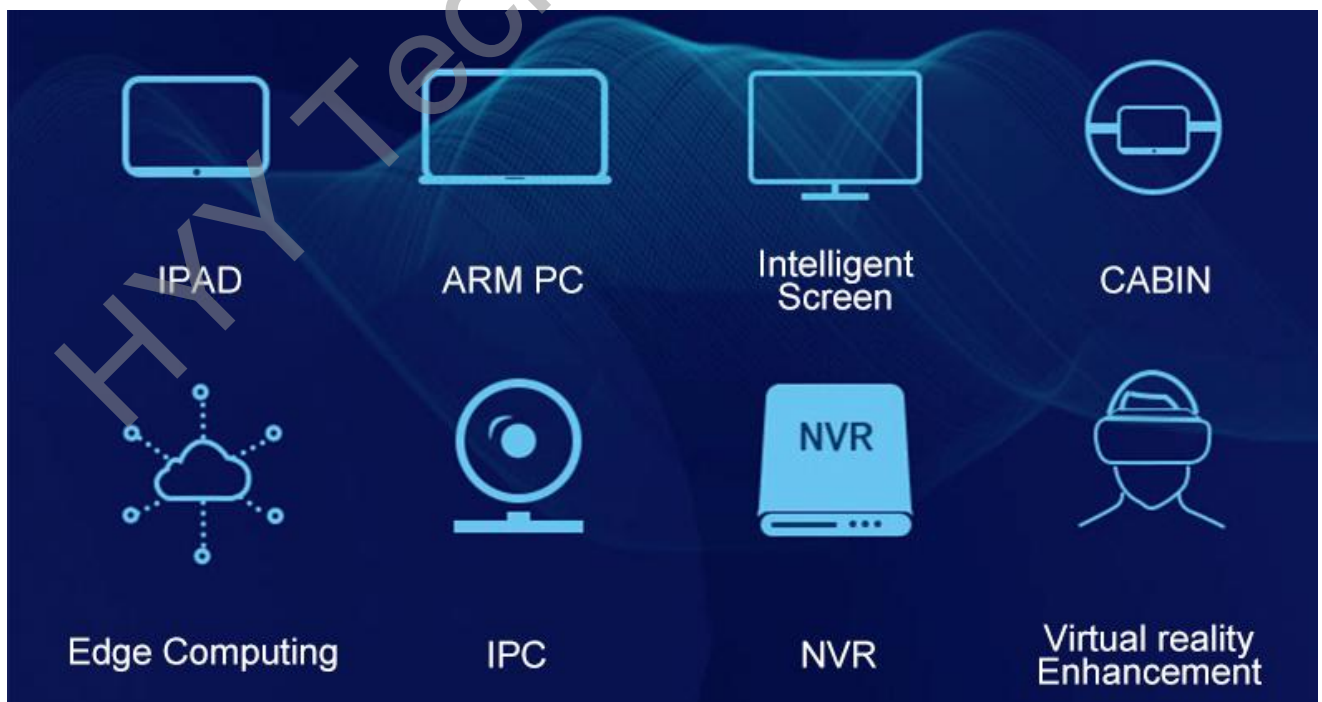
- HYY-P1 is an embedded 8K artificial intelligence board developed by HYY based on the core module SOM3588s designed by Rockchip, with the core of the new generation flagship chip RK3588 8-core (A76x4+A55x4) 64-bit processor of Rockchip; The main frequency is up to 2.4GHz, the integrated quad-core Mali-G610 GPU, and the AI accelerator NPU with built-in 6.0TOPs computing power. With strong performance and ultra-low power consumption, it can bring more optimized performance for various AI application scenarios.
- HYY-P1 supports multi-channel 8K video output and 4K video input 8K@60fps H.265/VP9 video decoding and 8K@30fps H.265/H.264 video coding, can be coded and decoded simultaneously, up to 32 channels 1080P@30fps Decoding and 16-way 1080P@30fps code; The powerful video encoding and decoding ability can make the picture 8K HD, and the picture quality is more exquisite.
- HYY-P1 supports Ubuntu 20.04, Debian11, Android 12 and other systems, with excellent real-time performance and high stability. In terms of hardware and software, it can add its own unique technology to ensure the stability of the product. It is widely used in ARM PC, edge computing, cloud server, intelligent NVR, smart large screen, AR/VR, smart car and other fields. It is equipped with complete development materials and mature application solutions, which can reduce the threshold for customer research and development, Shorten product development cycle.





Application field

HYY-P1 board can be used in edge computing, cloud server, ARM PC, smart NVR, intelligent cockpit, smart video wall, AR/VR, high-end tablet, multi-lens camera, smart car and other fields.



Specifications

Basic Specifications	
SOC	RockChip RK3588s
CPU	4x Cortex-A76 and 4x Cortex-A55 cores in dynamIQ configuration
GPU	Arm Mali-G610 MP4 GPU
AI Accelerator	6 TOPS NPU 3.0 (Neural Processing Unit) Supports framework switching of TensorFlow/MxNet/PyTorch/Caffe/etc
ISP	Integrated 48MP ISP with HDR&DNR
VPU	Video decoding:
	8K@60fps H.265/VP9/AVS2
	8K@30fps H.264/AVC/MVC
	4K@60fps AV1
	1080P@60fps MPEG-2/-1/VC-1/VP8
	Video encoding:
	8K@30fps encoding, Supports H.265/H.264
	* Achieves up to 32-channel 1080P@30fps decoding and 16-channel 1080p@30fps encoding
RAM	4GB/8GB/16GB/ 64bit LPDDR4/LPDDR4x/LPDDR5(Up to 32GB optional)
Storage	16GB/32GB/64GB/128GB eMMC
Storage Expansion	1 x TF Card
Hardware Specifications	
Camera	3 x 4 lane MIPI-CSI
Ethernet	1 x 1000Mbps RJ45
Display	Video output:
	1 x HDMI2.1 (8K@60fps or 4K@120fps)
	1 x DP1.4(8K@30fps)
Audio	2 x MIPI-DSI (4k@60fps)
	1 x HDMI2.1 Audio output
PCIE	1 x 3.5mm Audio output
	1 x M.2 (PCIe2.0)
USB	1 x USB3.0
	1 x USB-C (USB3.0 OTG/DP1.4)
	1 x USB2.0
Power	DC5V 4A input(Type-C)
Power	DC12V input(DC5.5x2.1mm)
	POE 48V power input (up to 60w)
Other Interface	1x RTC, 1x Debug(3P-2.0mm), 1x 26P-2.0mm(GPIO), 1x mic
OS/Software	
OS	Android 12.0

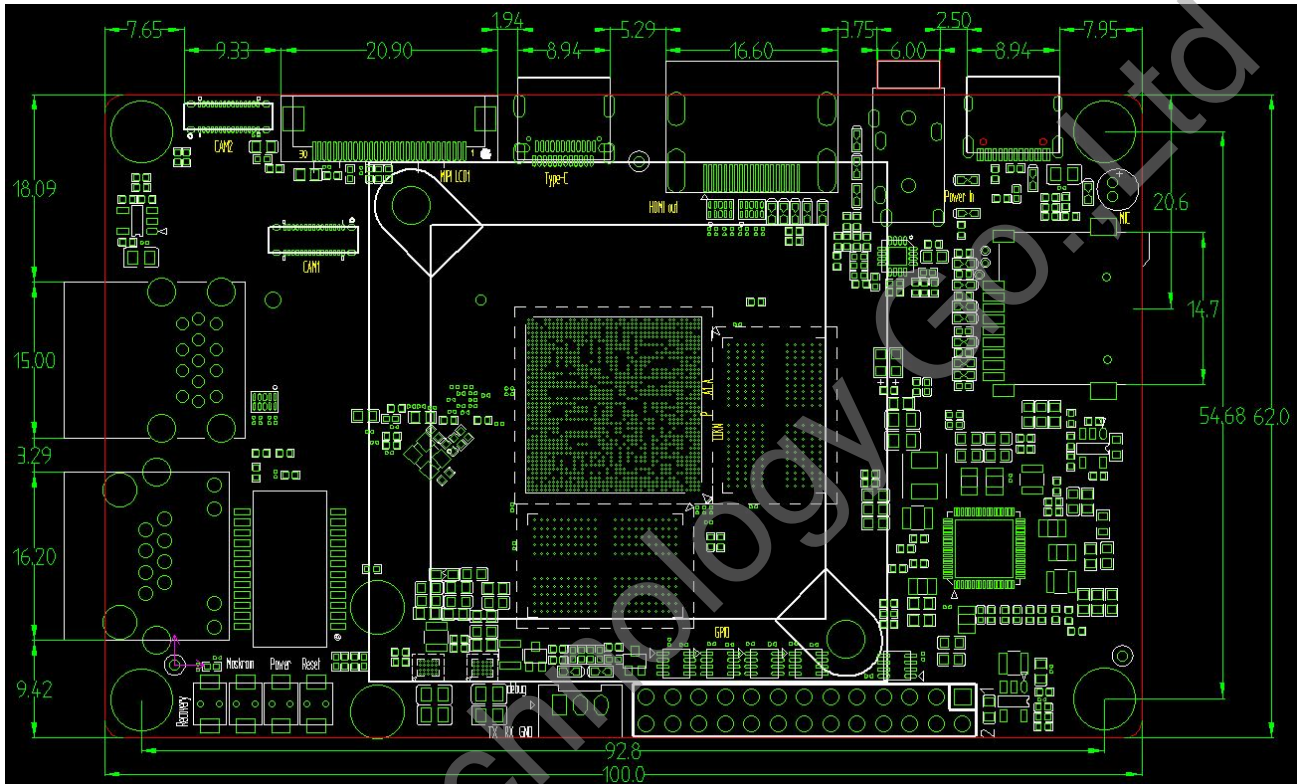
Debian11

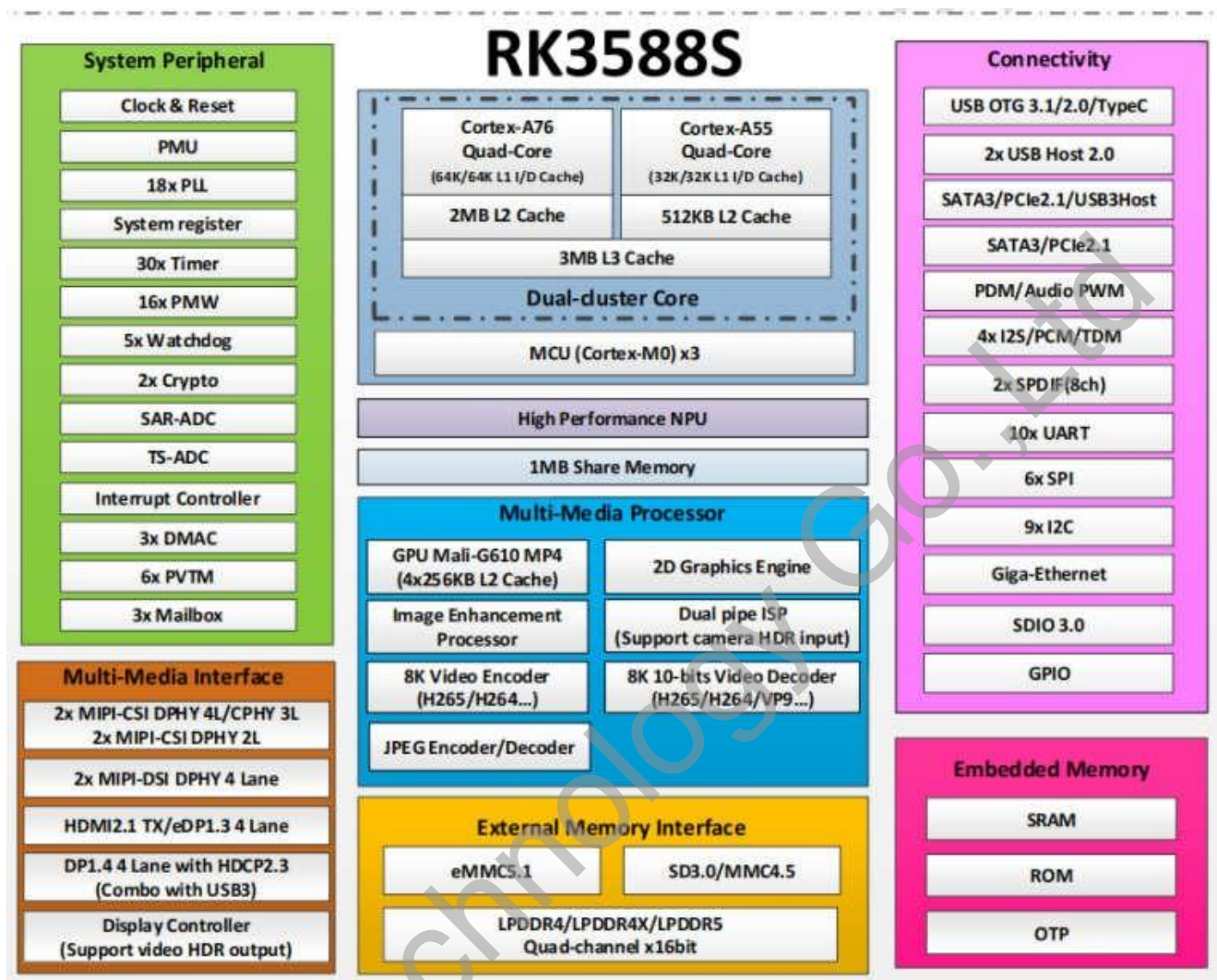
* Supports UEFI Boot

General

Size

62mm x 100mm





More help

If you have any questions about our products or services, you can contact us through the following ways:

Website: <http://www.we-signage.com>

Web Store: <https://we-signage.en.made-in-china.com>

E-Mail: hejiangyan@hotmail.com

Wechat: +86 18672559094

Skype: [hejiangyan_1](#)